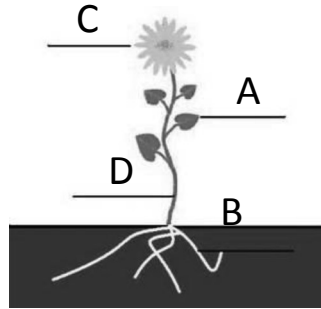


SOL4.4

Day 1

Plants reproduce in two ways:

1. \_\_\_\_\_
2. \_\_\_\_\_



Label the plant:

- A. \_\_\_\_\_
- B. \_\_\_\_\_
- C. \_\_\_\_\_
- D. \_\_\_\_\_

SOL4.4

Day 2

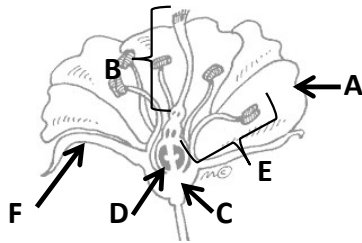
\_\_\_\_\_ is a green chemical that helps a plant make food. This process is called \_\_\_\_\_. Plants help animals breathe when it pulls in \_\_\_\_\_ and releases \_\_\_\_\_ through its leaves.

- carbon dioxide
- chlorophyll
- photosynthesis
- oxygen

SOL4.4

Day 3

Match the letter to the term:



- \_\_\_ stamen
- \_\_\_ ovary
- \_\_\_ pistil
- \_\_\_ sepal
- \_\_\_ ovule
- \_\_\_ petal

SOL4.4

Day 4

Write (T) rue or (F)alse beside each statement:

- \_\_\_ The stamen are covered in pollen.
- \_\_\_ Seeds are produced when pollen cells and ovary cells are joined.
- \_\_\_ Humans are the only ones that can pollinate a flower.
- \_\_\_ The stigma is the sticky tip on the pistil that receives pollen.
- \_\_\_ The pistil is where pollen travels down to the ovary.
- \_\_\_ Seeds do not need pollen to produce.

SOL5.1

Day 5

What title can be used for this classification chart?

- Mammals
- Insects
- Flowering Plants
- Monkeys

