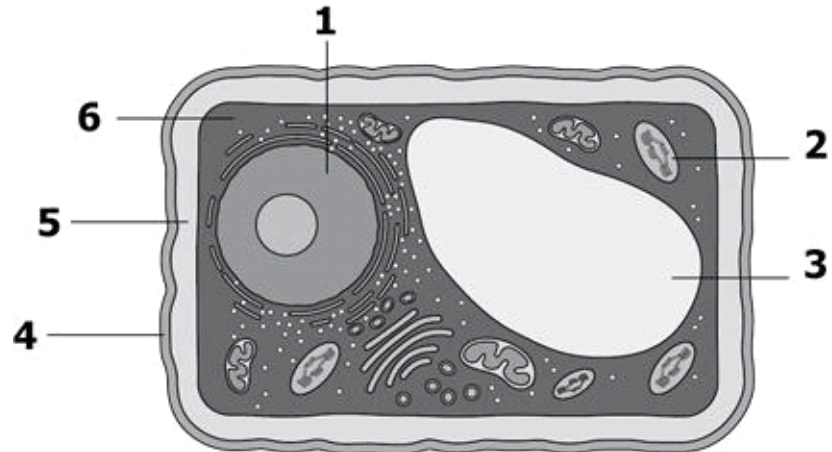


1



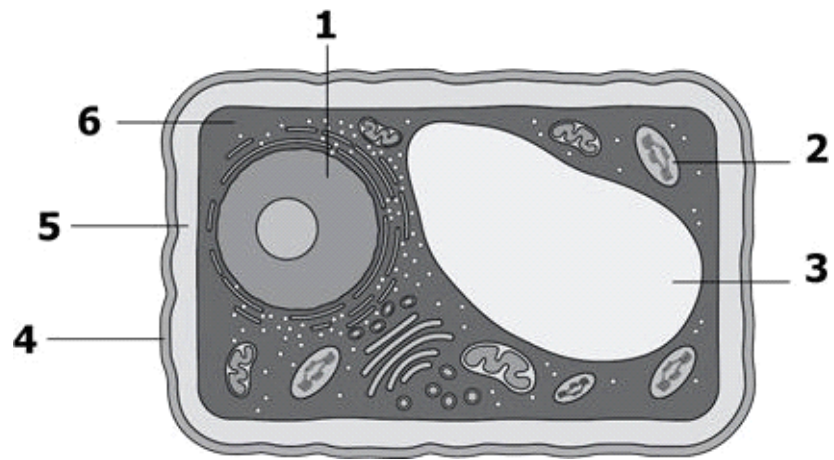
What part of the plant cell represents the cytoplasm?

- A 6
- B 3
- C 2
- D 5

2 **What jelly-like fluid surrounds the organelles of a cell?**

- A Cell membrane
- B Vacuole
- C Cytoplasm
- D Chloroplast

3



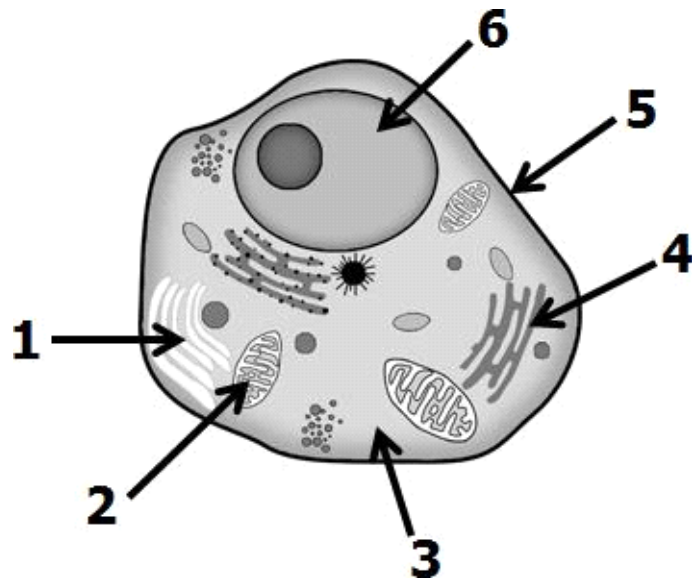
Which part of the diagram controls all cellular activities?

- A 4
- B 2
- C 1
- D 3

4 **What part of the cell controls all cell functions?**

- A Vacuole
- B Chloroplast
- C Nucleus
- D Cytoplasm

5



What part of the animal cell represents the cell membrane?

- A Section 4
- B Section 2
- C Section 1
- D Section 5

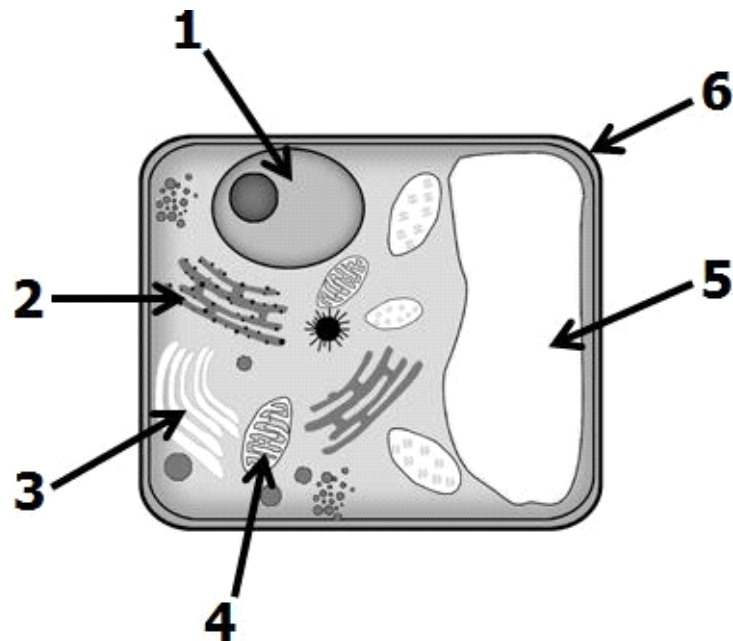
6 **What protective layer is found just inside the cell wall in a plant cell?**

- A Cytoplasm
- B Cell membrane
- C Vacuole
- D Chloroplasts

7 **Which organelle supports and protects the plant cell by being its outermost layer?**

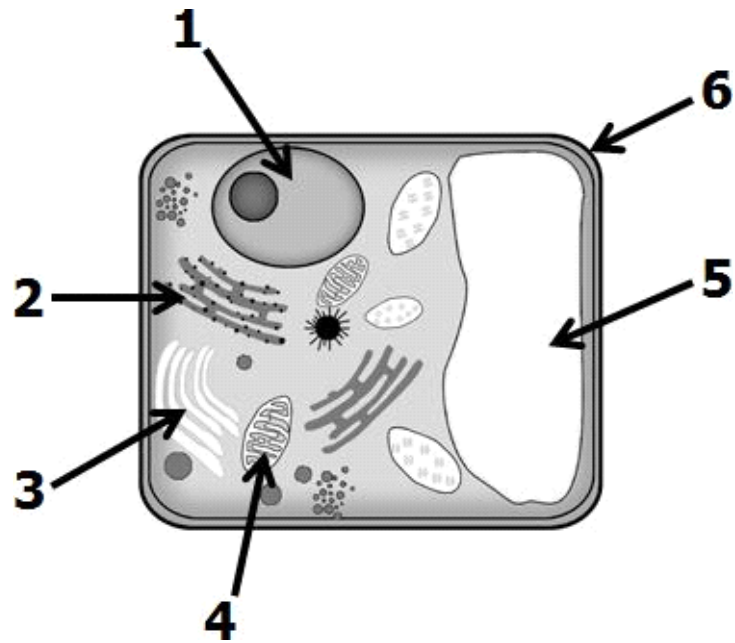
- A Cytoplasm
- B Chloroplasts
- C Cell membrane
- D Cell wall

8



What part of the plant cell represents the nucleus?

- A Section 2
- B Section 3
- C Section 1
- D Section 4



What part of the plant cell represents the cell wall?

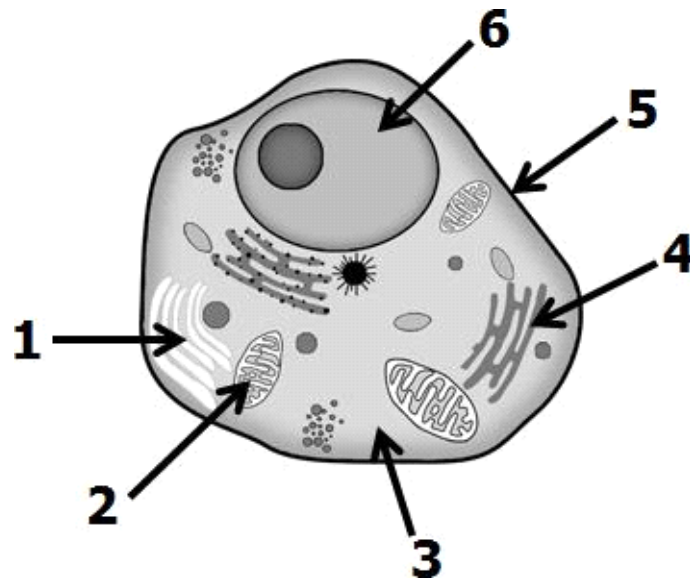
- A Section 4
- B Section 5
- C Section 6
- D Section 3

10 What part of the cell serves as storage for food and water in the cell?

- A Vacuoles
- B Organelles
- C Cytoplasms
- D Chloroplasts

11 The part of the animal cell that surrounds and protects is the —

- A cell's vacuole
- B cytoplasm
- C cell membrane
- D cytoplasts



What part of the animal cell represents the cytoplasm?

- A Section 4
- B Section 2
- C Section 3
- D Section 1

13 Which of these is the main function of a cell wall?

- A To store water
- B To make the plant green
- C To provide support
- D To make food

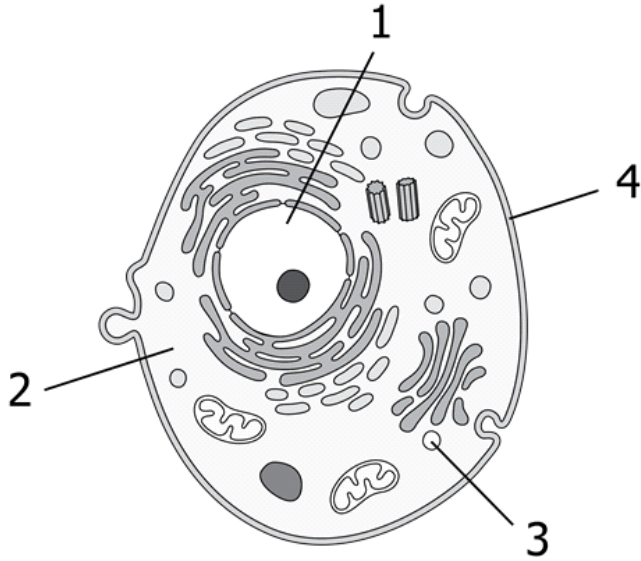
14 Which structure does a plant cell have that an animal cell does not have?

- A Cell wall
- B Vacuole
- C Cell membrane
- D Cytoplasm

15 Which of these organisms has cells with cell walls?

- A A bluebird
- B A ladybug
- C A fox squirrel
- D A pine tree

16 Directions: Type your answer in the box.



Which number represents the cell organelle that is in charge of the rest of the cell?

17 Directions: Click and drag the organelle to the correct box.

Complete the diagram by labeling the cell.

